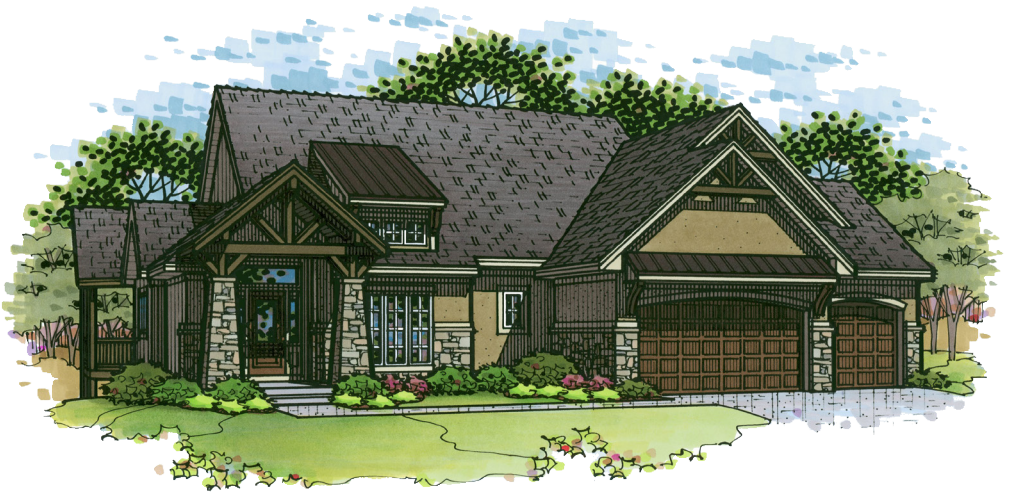




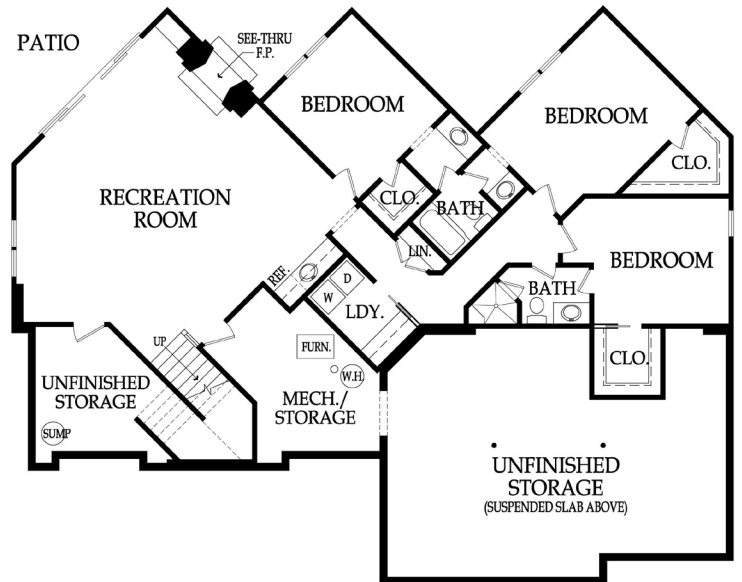
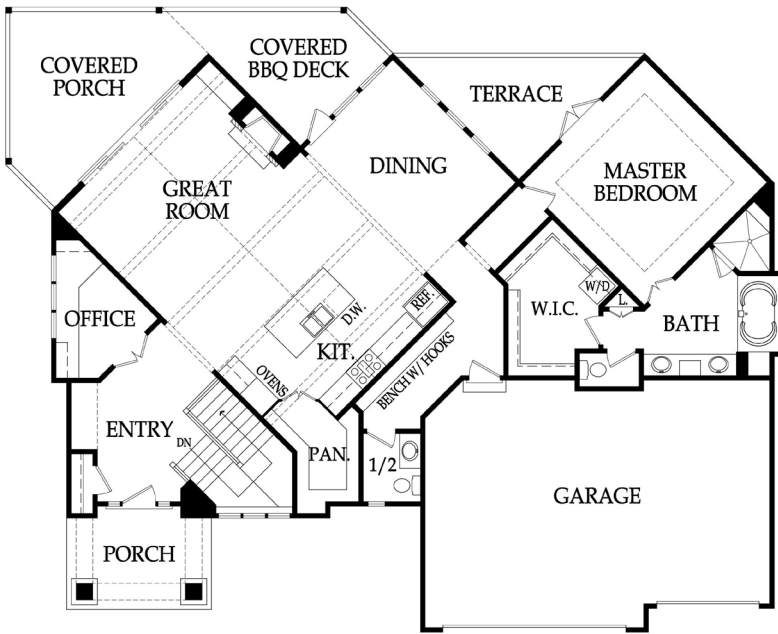
the Wildwood



3 CAR - REVERSE 1 1/2-STORY
4 BDRM • 3,250 SQ. FT.
4 BATH • 3 CAR GARAGE

MAIN LEVEL: 1,830 SQ. FT.

UPPER LEVEL: 1,420 SQ. FT.



SAB HOMES • RAE LYNN KING-BARNHART • 816.524.3855



All representations, dimensions and specifications may vary from those depicted and are subject to revision, change and/or modification at any time. | © SAB Homes, LLC | Wildwood_2020